
PalmaBot EXECUTOR platform

Vsebina

| | |
|---|----|
| PalmaBot EXECUTOR platform overview | 3 |
| Audience | 3 |
| How to become PalmaBot executor certified Partner? | 3 |
| Connect Partner platform with PalmaBot EXECUTOR platform | 3 |
| Steps to connect PalmaBot EXECUTOR to Partner platform | 5 |
| PalmaBot executor protocol - parameters explained..... | 5 |
| How execution works?..... | 6 |
| What should Partner platform support on their side? | 7 |
| Advanced features for Partner platform. | 7 |
| User strategy management and order history | 8 |
| Examples – how to set order on Partner platform | 10 |
| INSTANT BUY 1 BTC with USDT on exchange Binance in demo (paper trading)? | 10 |
| INSTANT SELL 1 BTC with USDT on exchange Binance in demo (paper trading)? | 10 |
| LIMIT BUY 1 BTC with USDT on exchange Binance in demo (paper trading) ? | 10 |
| LIMIT SELL 1 BTC with USDT on exchange Binance in demo (paper trading) ? | 11 |
| INSTANT BUY 1 BTC with USDT and 1% STOP LOSS and 2% TAKE PROFIT on exchange Binance in demo mode? | 11 |
| LIMIT BUY 1 BTC with USDT and 1% STOP LOSS and 2% TAKE PROFIT on exchange Binance in demo mode? | 11 |
| 1% STOP LOSS and 2% TAKE PROFIT 1 BTC with USDT on exchange Binance in demo mode?..... | 11 |
| TRAILING STOP BUY 1 BTC with USDT, 0.5% threshold on exchange Binance in demo mode? | 12 |
| TRAILING STOP SELL 1 BTC with USDT, 0.5% threshold on exchange Binance in demo mode? | 12 |
| Supported exchanges..... | 12 |

PalmaBot EXECUTOR platform overview

PalmaBot EXECUTOR platform for advanced digital asset traders offers real-time execution of custom trading signals from any external 3rd party certified environment (Partner platform) on PalmaBot supported exchanges (20+) and coin/market pairs (2000+).

Create custom Trading Strategy, back-test it, connect PalmaBot executor, exercise new strategy in risk free demo mode and finally switch to real-money. Monitor your winning strategy on the go, with PalmaBot unique signal based Telegram chat-bot application.

Instant BUY and SELL with SL, TP, trailing and more are supported (see PalmaBot EXECUTOR protocol). When connected with Partner platform, user is notified for every execution being able to fully control selected strategy, stopping it at any time on the go and so preventing unnecessary flaws or other possible disasters. Advanced analytics let user check orders history and see strategy stats.

Audience

Many traders create their own trading strategies on platforms like TradingView. They use a number of complex indicators and try to create a strategy that has a positive outcome. Such analytic tools enable them to back-test and see the results on limited history of analysed signal.

PalmaBot offers execution of such strategies with simple BUY, SELL signals or advanced trading commands in demo mode or with real-money.

How to become PalmaBot executor certified Partner?

To become PalmaBot executor certified Partner:

1. We need to whitelist your server IP
2. You need to sign PalmaBot executor Partnership contract that is available in our legal department upon request – legal@palmabot.com

Connect Partner platform with PalmaBot EXECUTOR platform

How to connect Partner platform (like TradingView,...) with PalmaBot executor?

Partner platform triggers alarms, that are set by user of that platform. For example: *if user on TradingView sets alarm: when BTC price crosses 10.000 USD mark on Binance, alarm is triggered.*

This alarm should call PalmaBot REST **webhook** with **JSON parameters** (see PalmaBot EXECUTOR protocol).

Open Telegram messenger and join [@palma_test_bot](https://t.me/palma_test_bot) -> use command **/xc**

Test environment webhook address: <https://sandbox.palmabot.com/xc>

Try if it works with CURL:

```
curl -H 'Content-Type: application/json; charset=utf-8' -d 'code=yourPalmaBotCodeHere
command=sell amount=0.001 exchange=binance coinmarket=BTCUSDT demo=1 id=myFirstStrategy'
-X POST https://sandbox.palmabot.com/xc
```

For production environment use webhook <https://p.palmabot.com/xc> and @palma11bot

FROM USER PERSPECTIVE :

How PalmaBot users connect with external platform?

In Telegram messenger search for PalmaBot (<https://t.me/palma11bot>) chat-bot application and use command `/xc` (eXecutor Connect). It will show to user **PalmaBot connection code, webhook address and parameters**. See figure 1:

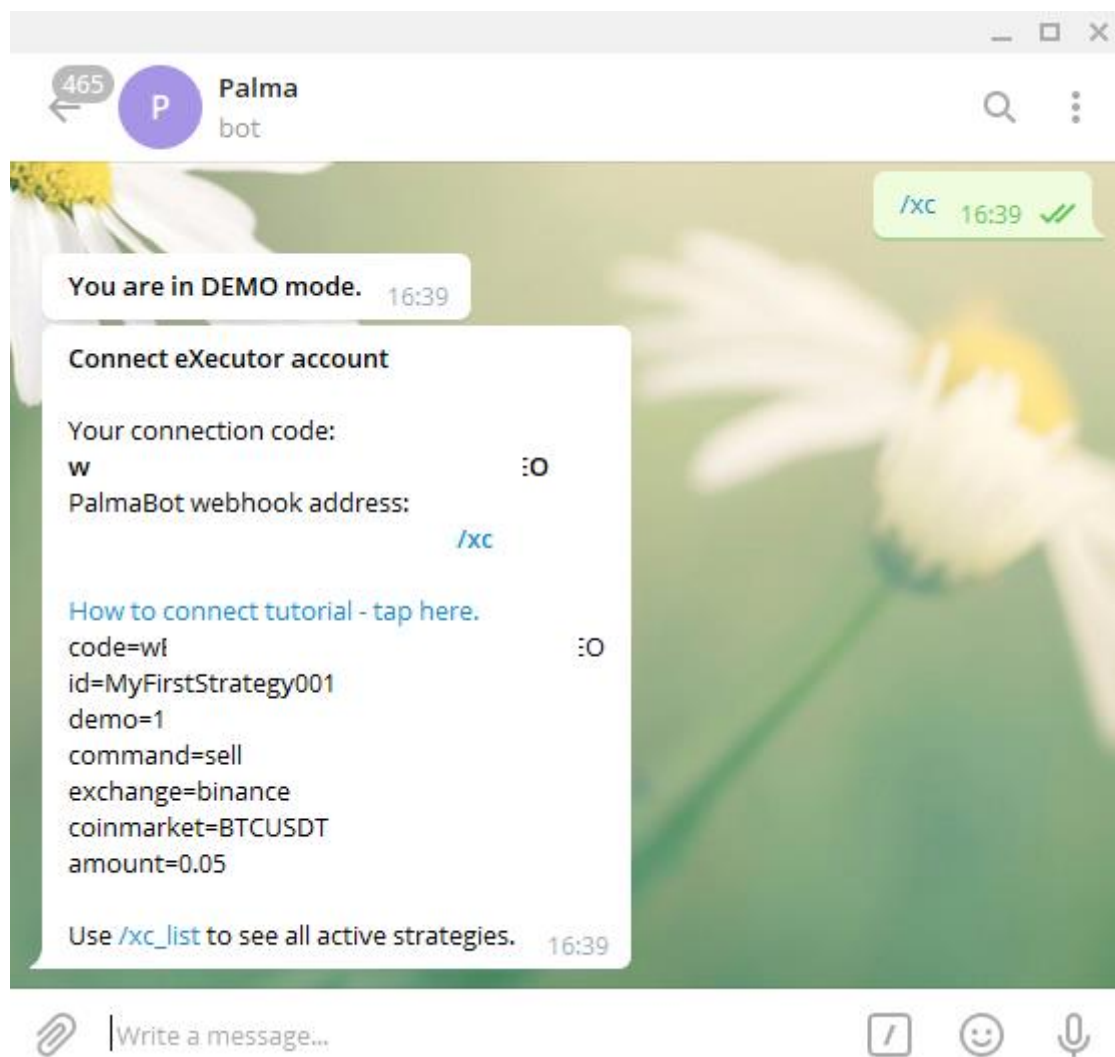


Figure 1: Connect PalmaBot executor with Partner platform

Steps to connect PalmaBot EXECUTOR to Partner platform

CONNECT PLATFORMS

1. Join PalmaBot chat-bot application <https://t.me/palma11bot>
2. Use command /xc to get webhook address and parameters
3. Use Webhook address: <https://p.palmabot.com/xc> on partner Alert section
4. Copy parameters and paste them to partner Alert section
5. Use TEST button to see if command gets to PalmaBot executor. Webhook returns 1 if OK or error message if not OK. Partner platform can show error message to user.

EXECUTE STRATEGY

1. When first alarm is triggered on Partner platform, PalmaBot will notify user with possibility to AUTOMATE strategy.
2. If user on PalmaBot is in DEMO mode, after automating strategy everything is SET.
3. If user is not in DEMO mode, user must enter API keys for that exchange. After that everything is ready to go.
4. Next ALERT will be executed automatically and user will be notified.
5. With each execution of alert triggered on Partner platform, it is possible to DEACTIVATE automatic execution of strategy. With this action next alert will not be executed automatically, but only shown as message to user.

CONTROL EXECUTION

1. With every alert/signal received from Partner platform enabled and automated, executing on PalmaBot platform user can deactivate automatic execution and stop selected strategy.
2. Listing activated strategies offers different way of deactivating the strategy
3. With **/orders** history of executed trades is available

PalmaBot executor protocol - parameters explained

ALL parameters are passed as JSON when calling PalmaBot webhook.

code*: User PalmaBot connection code, generated by PalmaBot

id*: unique strategy identifier

command*: buy, sell

exchange*: exchange on where you would like to execute trade

coinmarket*: coinmarket pair like (BTCUSDT)

amount*: amount of coin to trade

demo: set demo 1:on or 0:off – default = on, For demo mode (paper trading) use demo=1

comment: your comment

name: name of your strategy

*mandatory parameters

These parameters should be used on Partner platform when setting new alert like this:

```
code=YourpalmaBotCodeHere id=MyFirstStrategy001 demo=1 command=sell
exchange=binance coinmarket=BTCUSDT amount=0.05
```

How execution works?

After (1) PalmaBot platform and Partner platform are connected and (2) strategy is automated, user will get message in PalmaBot Telegram application for every executed trade. If command is BUY, PalmaBot will execute INSTANT BUY on selected exchange, trading pair (coin market) and amount. After trade is executed it will show the result to user in Telegram PalmaBot chat-bot.

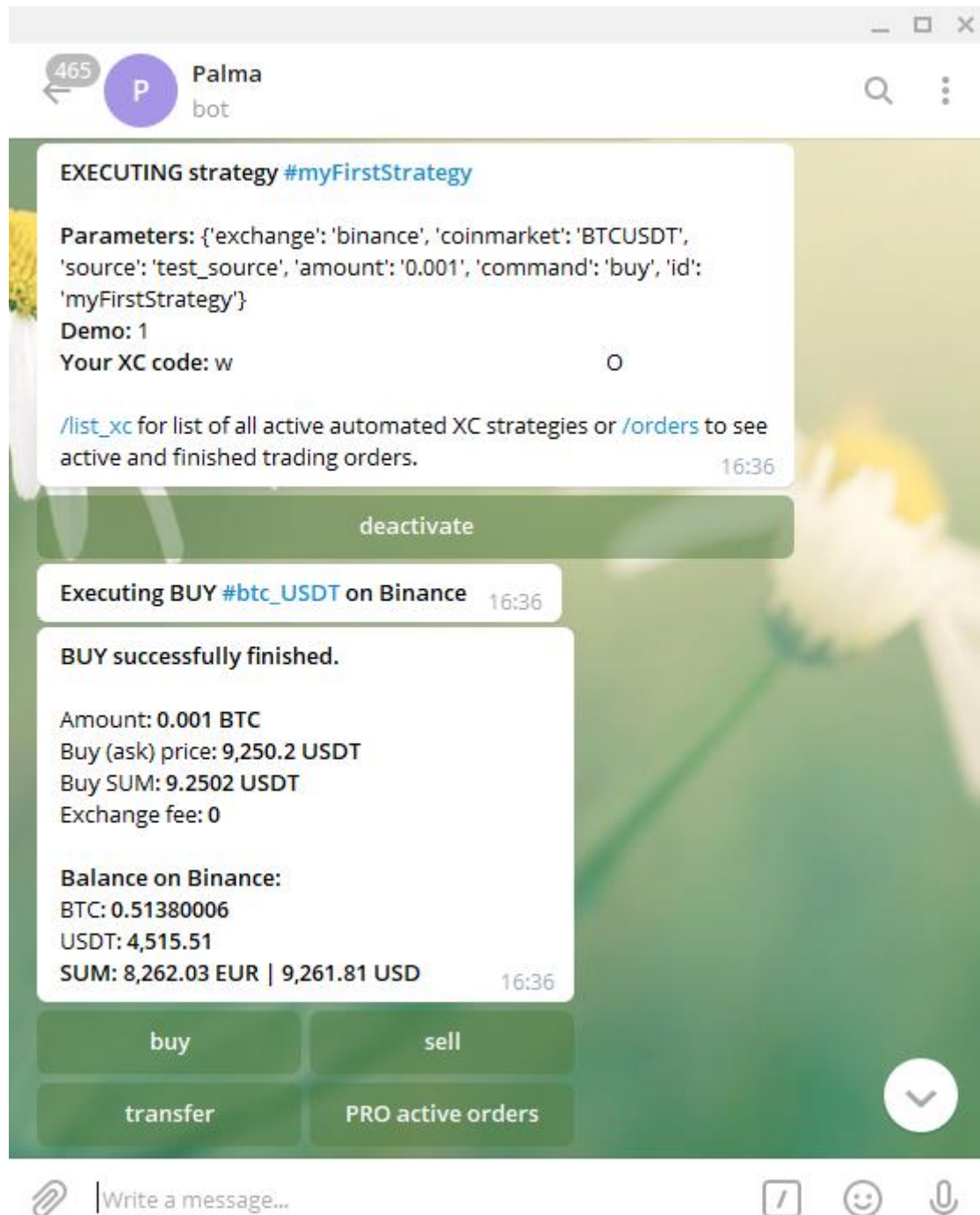


Figure 2: How execution works

What should Partner platform support on their side?

Users of Partner platform are mainly doing technical, fundamental or other kind of digital assets analyses. Sometimes they would like to be notified as some criteria is met. This kind of event can trigger alarm. Alarm can be sent to various targets like email, SMS.

In our case REST webhook should be called with parameters as described in section PalmaBot executor protocol explained.

From user perspective the easiest way of setting up alarm with webhook is to copy-paste predefined text from Telegram chat-bot app PalmaBot to Partner platform when setting up new alarm.

As example this is how TradingView alarm setup looks like:

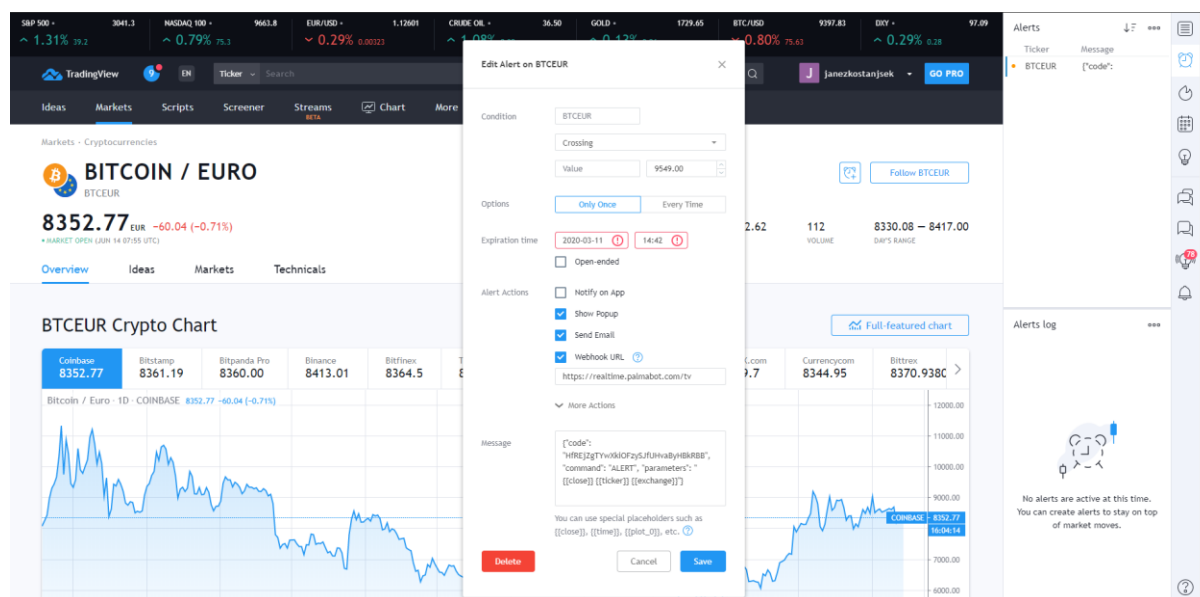


Figure 3: TradingView alarm with webhook and parameters

Advanced features for Partner platform.

When setting alarm on Partner platform, user can enter price manually (e.g. price=10000) or partner platform can offer placeholder for dynamic addressing of such variables. TradingView uses curly bracket form: `{{ticker}}`

Advanced parameters supported on PalmaBot executor are:

command=buy_sl_tp -> buy with stop loss and take profit

command=sl_tp -> set stop loss and take profit

command=tss -> set trailing stop sell

command=tsb -> set trailing stop buy

stop_loss=2%

take_profit=5%

trailing=1 -> stop_loss trailing: 1 ON, 0: OFF

price=10000 -> if no price, instant buy or instant sell will be executed, if price defined limit sell or limit buy will be executed

User strategy management and order history

At any time user can deactivate and stop automation of automated strategy. The list is available with `xc_list` command.

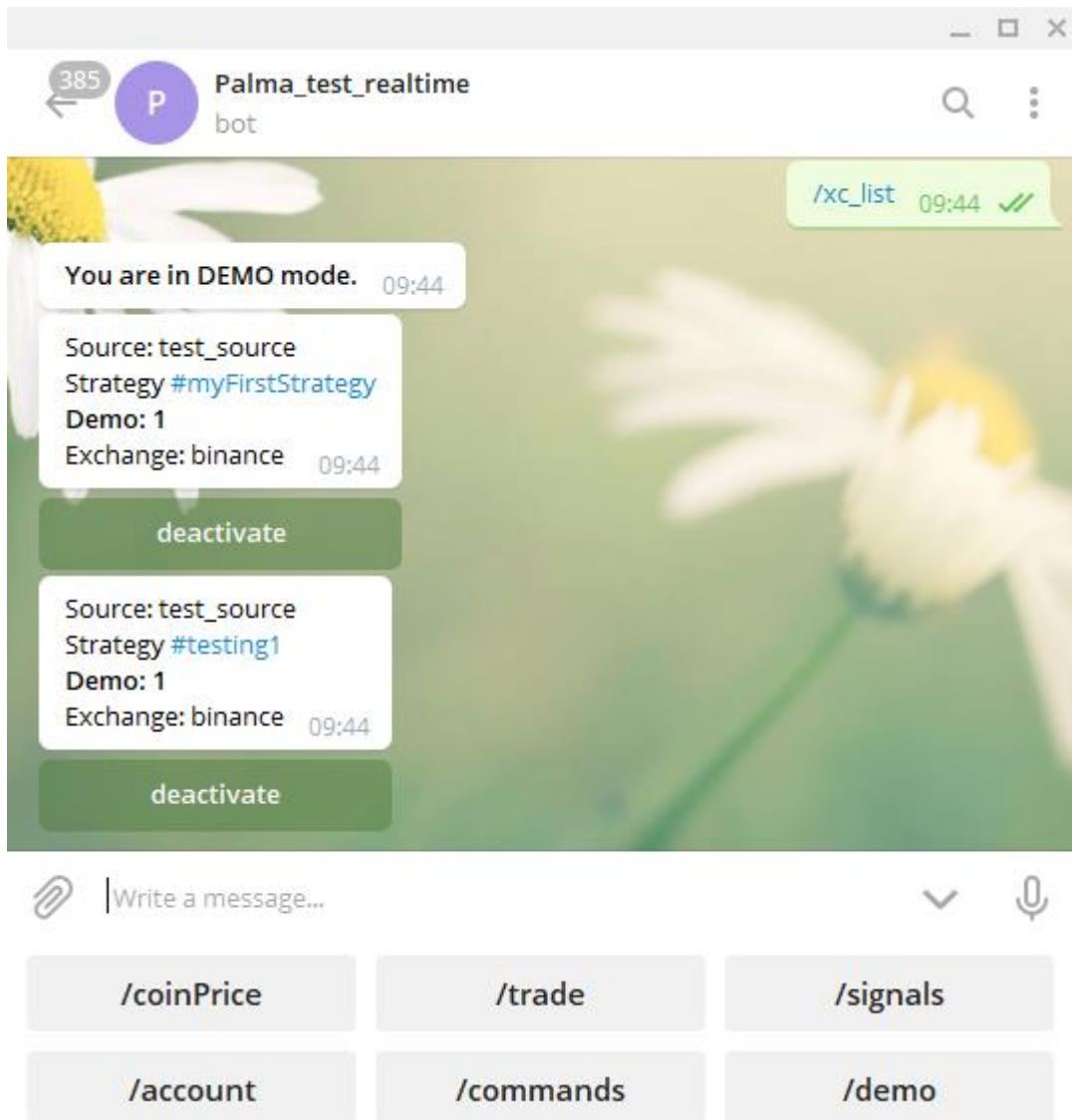


Figure 4: List of active automated strategies

It is possible to create as many strategies as PalmaBot package allows. All trades executed on PalmaBot platform are visible with /orders command.

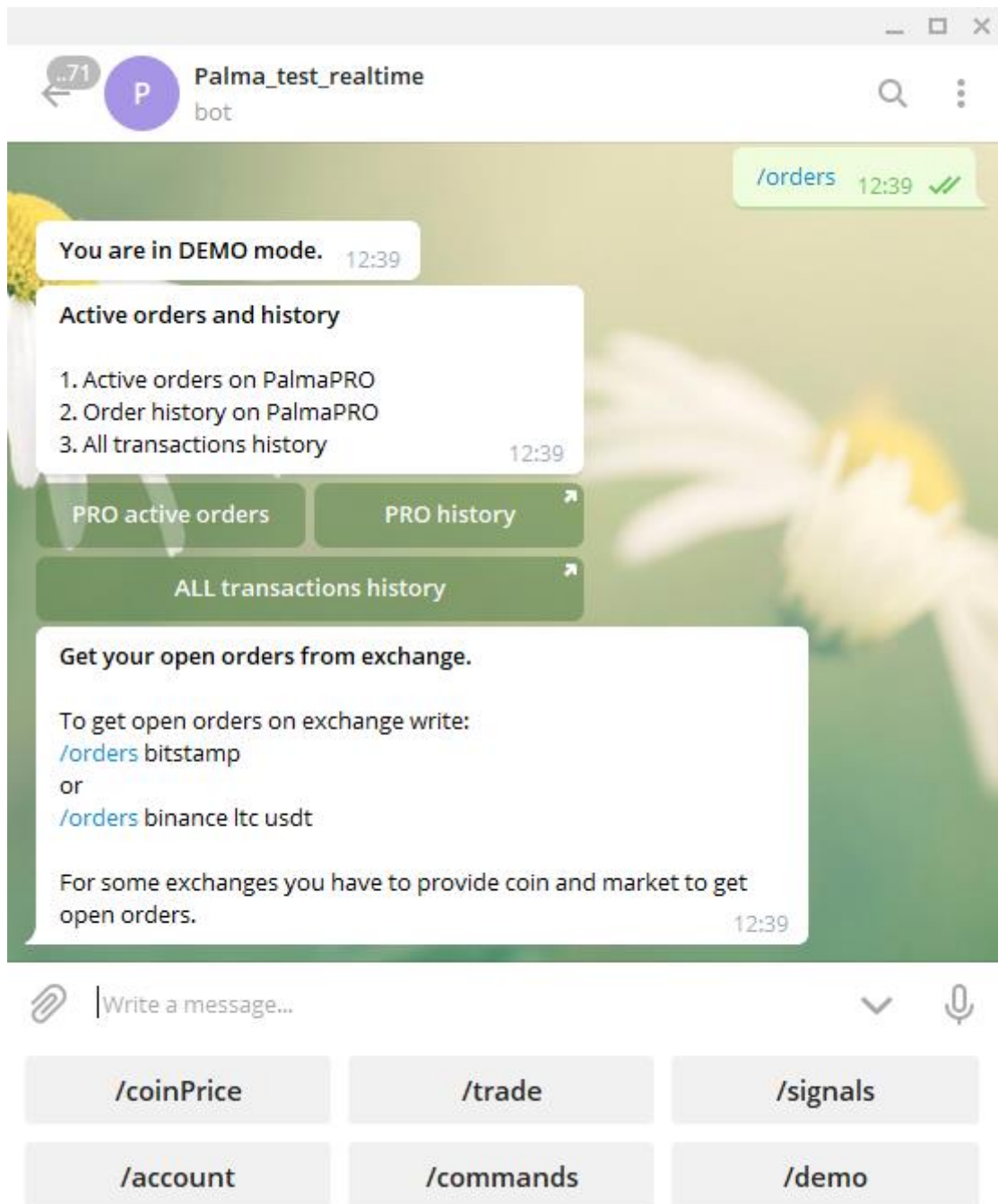


Figure 5: Orders management

PRO active orders and PRO history shows all orders that have PRO characteristics. ALL transactions history will show a list of all finished orders.



History of ALL orders

| id | exchange | coin | market | amount | price | raw price | fee | fee currency | command | sub-command | demo | dt | comment |
|------|----------|------|--------|--------|---------|-----------|-----|--------------|---------|-------------|------|----------------------------|--|
| 2722 | binance | btc | usdt | 0.0044 | 9421.85 | 9421.85 | 0 | | buy | | 1 | 2020-06-14 12:05:02.092350 | s60_v330_sl_{{plot("SL")}}_tp_{{plot("TP")}}_P_9422.39_ts_2020-06-14T10:04:00Z |
| 2721 | binance | btc | usdt | 0.0044 | 9422.86 | 9422.86 | 0 | | buy | | 1 | 2020-06-14 11:24:03.698356 | s60_v330_sl_{{plot("SL")}}_tp_{{plot("TP")}}_P_9422.86_ts_2020-06-14T09:23:00Z |
| 2720 | binance | btc | usdt | 0.0044 | 9407.27 | 9407.27 | 0 | | buy | | 1 | 2020-06-14 09:08:02.792526 | s60_v330_sl_{{plot("SL")}}_tp_{{plot("TP")}}_P_9407.26_ts_2020-06-14T07:07:00Z |
| 2719 | binance | btc | usdt | 0.0044 | 9409.77 | 9409.77 | 0 | | buy | | 1 | 2020-06-14 08:55:02.137662 | s60_v330_sl_{{plot("SL")}}_tp_{{plot("TP")}}_P_9408.75_ts_2020-06-14T06:54:00Z |
| 2718 | binance | btc | usdt | 0.0044 | 9392.74 | 9392.74 | 0 | USDT | sell | SELL_SL | 1 | 2020-06-14 08:50:13.856451 | s60_v330_sl_{{plot("SL")}}_tp_{{plot("TP")}}_P_9429.95_ts_2020-06-14T05:51:00Z |

Figure 6: Orders history

Examples – how to set order on Partner platform

Examples will show how to use parameters on Partner platform to trigger trading action on PalmaBot. In @palma11bot Telegram chat-bot app use command /xc to get your PalmaBot code. Use parameter demo=1 for paper trading.

INSTANT BUY 1 BTC with USDT on exchange Binance in demo (paper trading)?

```
code=YourPalmaBotCode_with_/xc_command
strategy_id=myStrategy
demo=1
command=buy
exchange=binance
coinmarket=BTCUSDT
amount=1
```

INSTANT SELL 1 BTC with USDT on exchange Binance in demo (paper trading)?

```
code=YourPalmaBotCode_with_/xc_command
strategy_id=myStrategy
demo=1
command=sell
exchange=binance
coinmarket=BTCUSDT
amount=1
```

LIMIT BUY 1 BTC with USDT on exchange Binance in demo (paper trading) ?

```
code=YourPalmaBotCode_with_/xc_command
strategy_id=myStrategy
```

```
demo=1
command=buy
exchange=binance
coinmarket=BTCUSDT
amount=1
price=9500
```

LIMIT SELL 1 BTC with USDT on exchange Binance in demo (paper trading) ?

```
code=YourPalmaBotCode_with_/xc_command
strategy_id=myStrategy
demo=1
command=sell
exchange=binance
coinmarket=BTCUSDT
amount=1
price=9500
```

INSTANT BUY 1 BTC with USDT and 1% STOP LOSS and 2% TAKE PROFIT on exchange
Binance in demo mode?

```
code=YourPalmaBotCode_with_/xc_command
strategy_id=my_buy_sl_tp_strategy
demo=1
command=buy_sl_tp
exchange=binance
coinmarket=BTCUSDT
amount=1
stop_loss=1%
take_profit=2%
```

LIMIT BUY 1 BTC with USDT and 1% STOP LOSS and 2% TAKE PROFIT on exchange
Binance in demo mode?

```
code=YourPalmaBotCode_with_/xc_command
strategy_id=my_buy_sl_tp_strategy
demo=1
command=buy_sl_tp
exchange=binance
coinmarket=BTCUSDT
amount=1
stop_loss=1%
take_profit=2%
price=9500
```

1% STOP LOSS and 2% TAKE PROFIT 1 BTC with USDT on exchange Binance in demo
mode?

```
code=YourPalmaBotCode_with_/xc_command
```

```
strategy_id=my_buy_sl_tp_strategy
demo=1
command=sl_tp
exchange=binance
coinmarket=BTCUSDT
amount=1
stop_loss=1%
take_profit=2%
```

TRAILING STOP BUY 1 BTC with USDT, 0.5% threshold on exchange Binance in demo mode?

```
code=YourPalmaBotCode_with_/xc_command
strategy_id=my_buy_sl_tp_strategy
demo=1
command=tsb
exchange=binance
coinmarket=BTCUSDT
amount=1
threshold=0.5%
```

TRAILING STOP SELL 1 BTC with USDT, 0.5% threshold on exchange Binance in demo mode?

```
code=YourPalmaBotCode_with_/xc_command
strategy_id=my_buy_sl_tp_strategy
demo=1
command=tss
exchange=binance
coinmarket=BTCUSDT
amount=1
threshold=0.5%
```

Supported exchanges

In Telegram messenger [@palma11bot](#) use command /exchanges to get all PalmaBot supported exchanges.